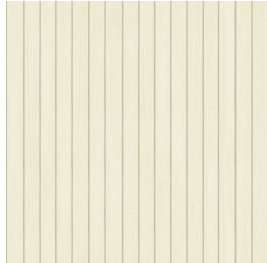


Entréfasad Radhus A8



Fasad:

Omvänd stående lockläktpanel i trä
(22x120).

Målas i ljus gul, Kulör NCS S 0520-Y

Tak:

Randers Tegel, RT 820, Höjslev 1-kupig,
lille dansk. Tegelpannor Mörkgrå.

Fönster och fönsterdörrar:

Traryd eller likvärdigt.

Aluminium, Antracitgrå, RAL 7016

Ytterdörrar:

Trä målas i Antracitgrå.

Kulör NCS S8000-N

Fönsterbleck:

Aluminium, Antracitgrå, RAL 7016

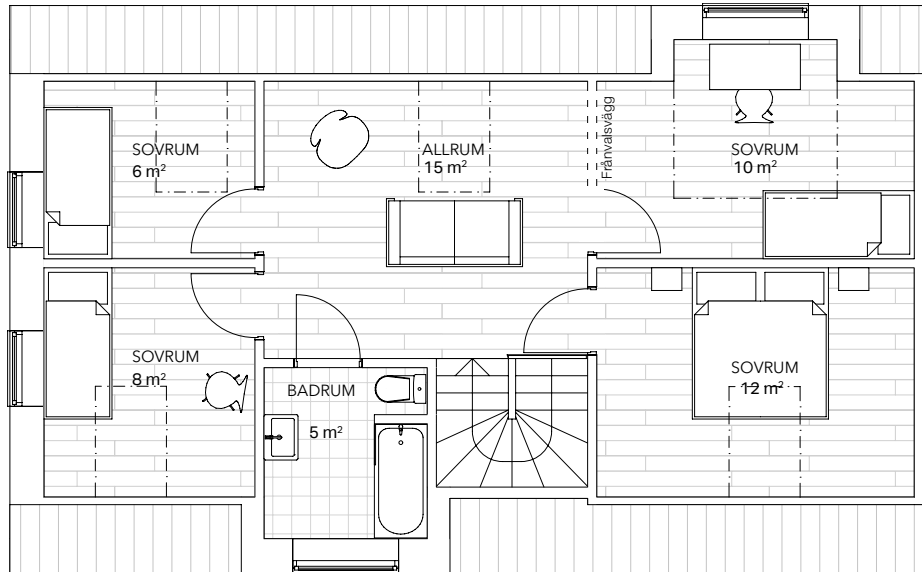
Stuprör, byggplåt:

Plannja eller likvärdigt.

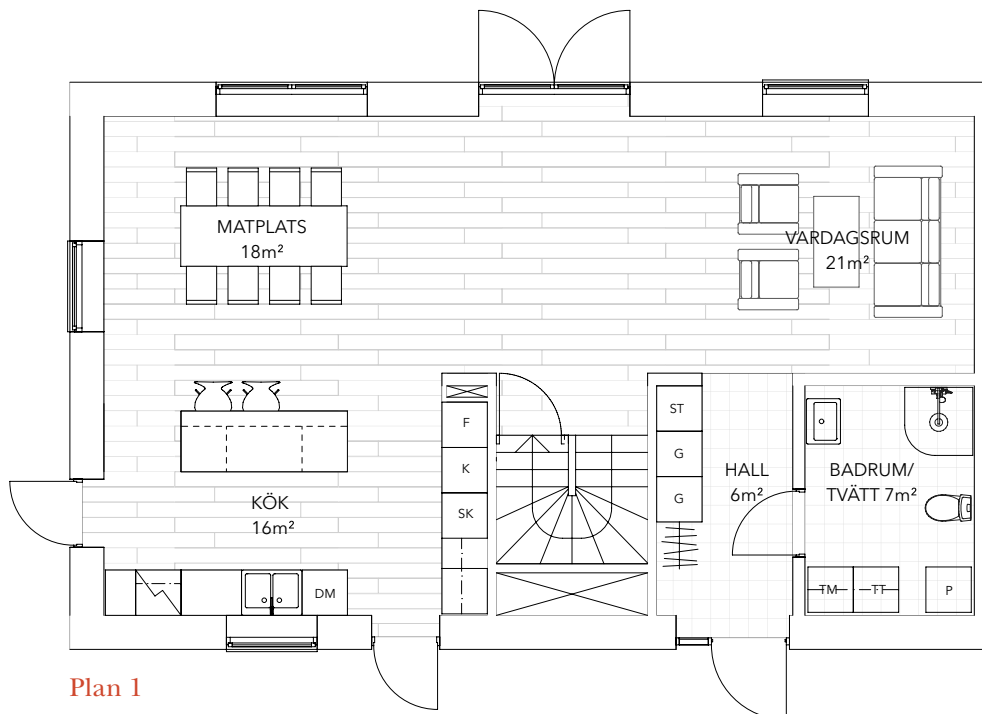
Stål, Mörk silvermetallic, RAL 9007

Päronlunden

Hus A 1, 5, 8, 11



Plan 2



Plan 1

K	Kylskåp	G	Garderob
F	Frys	TM	Tvättmaskin
SK	Skåp	TT	Torktumlare
DM	Diskmaskin	P	Panna
ST	Städsåp		

0 5 m

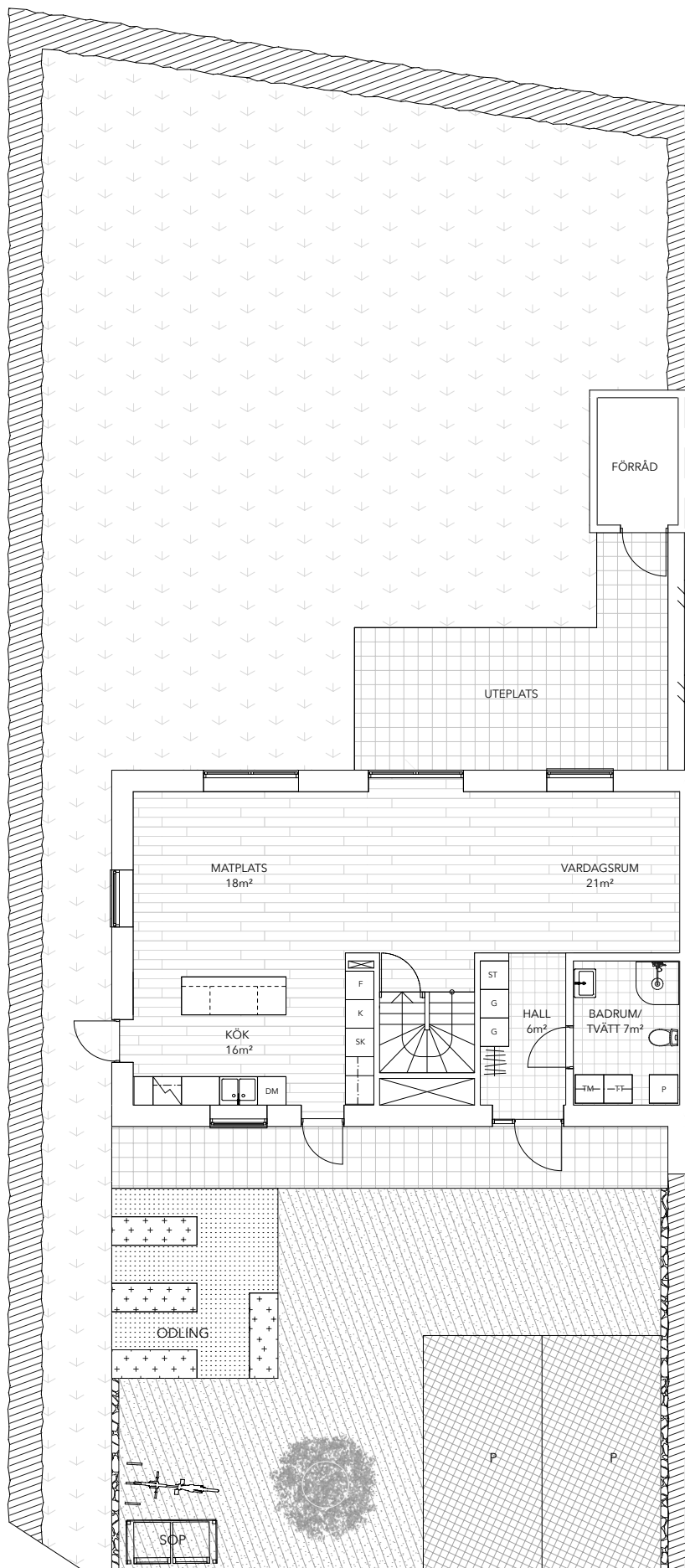
Skala 1:100

Med reservation för eventuella ändringar och tryckfel.

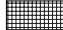

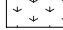




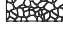


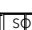
Päronlunden

Situationsplan





FÖRKLARINGAR

-  GRÄSARMERAD BETONG
-  BETONGPLATTOR 1
-  GRÄSYTA 1
-  PLANTERING MED CORTENKANT
-  HÄCK
-  STENMJÖL
-  SINGEL MED CORTENKANT
-  KANTSTEN
-  TRÄD MED CORTENKANT
-  STAKET
-  SÖP 2st FYRFACKSKÄRL MED TRÄRIBBOR
SE SEPARAT RITNING