

Entréfasad Radhus A5



Fasad:

Liggande panel i trä (22x120).
Målas i vit, Kulör NCS S 1102-G95Y

Tak:

Icopal takpapp eller likvärdig.
TopSafe 14°, Kristallsvart.

Fönster och fönsterdörrar:

Traryd eller likvärdigt.
Aluminium, Antracitgrå, RAL 7016

Ytterdörrar:

Trä målas i Antracitgrå.
Kulör NCS S8000-N

Fönsterbleck:

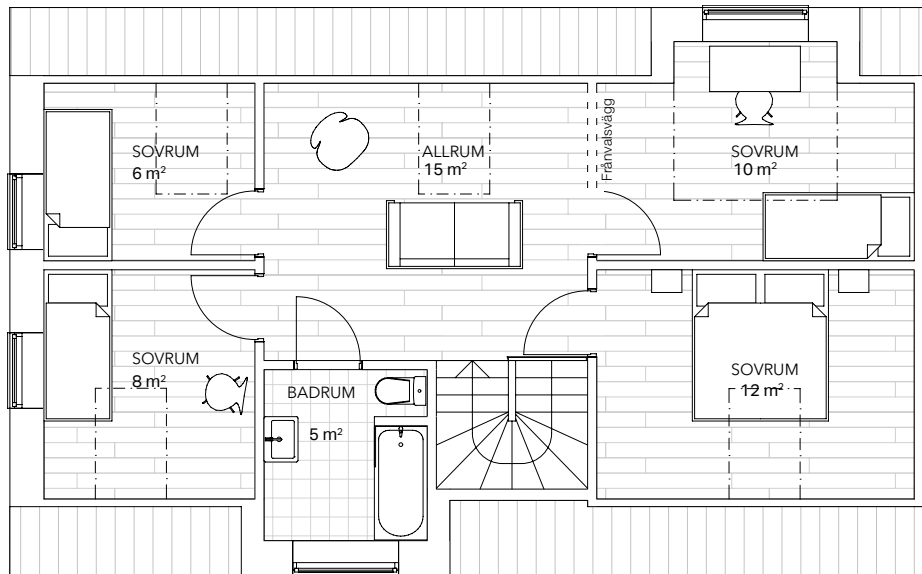
Aluminium, Antracitgrå, RAL 7016

Stuprör, byggplåt:

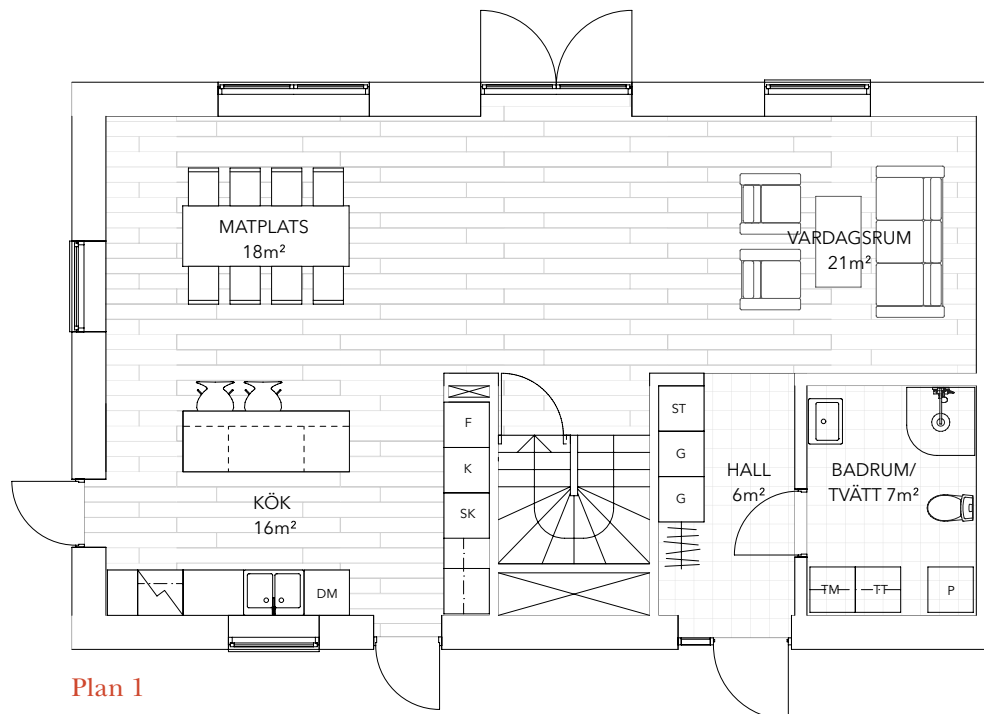
Plannja eller likvärdigt.
Stål, Antracitgrå, RAL 7016

Päronlunden

Hus A 1, 5, 8, 11



Plan 2



Plan 1

K	Kylskåp	G	Garderob
F	Frys	TM	Tvättmaskin
SK	Skåp	TT	Torktumlare
DM	Diskmaskin	P	Panna
ST	Städsåp		

0 5 m

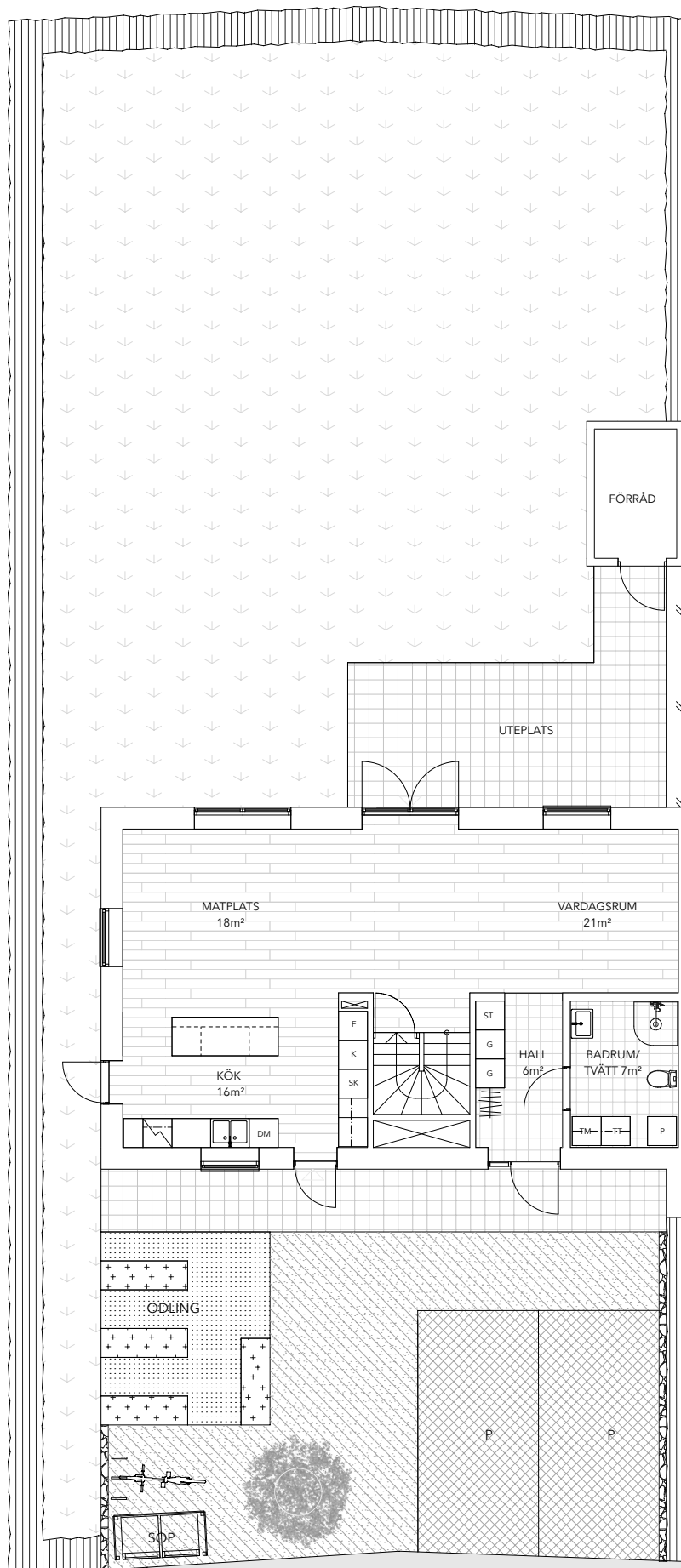
Skala 1:100

Med reservation för eventuella ändringar och tryckfel.

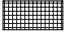


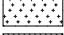


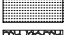


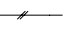

Päronlunden

Situationsplan





FÖRKLARINGAR

-  GRÄSARMERAD BETONG
-  BETONGPLATTOR 1
-  GRÄSYTA 1
-  PLANTERING MED CORTEKANT
-  HÄCK
-  STENMJÖL
-  SINGEL MED CORTEKANT
-  KANTSTEN
-  TRÄD MED CORTEKANT
-  STAKET
-  2st FYRFACKSKÄRL MED TRÄRIBBOR
SE SEPARAT RITNING