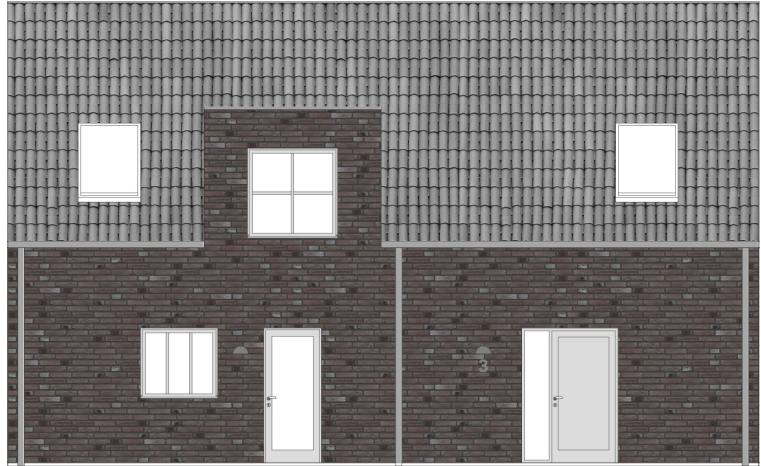


# Entréfasad Radhus A14



Fasad:  
Tegelmäster 2446, Persa Hard.  
Tegel, Brunlila med svart fog,  
vilt förband.

Tak:  
Randers Tegel, RT 820, Höjslev 1-kupig,  
lille dansk. Tegelpannor Mörkgrå.

Fönster och fönsterdörrar:  
Elitfönster eller likvärdigt.  
Aluminium, Naturanodiserad

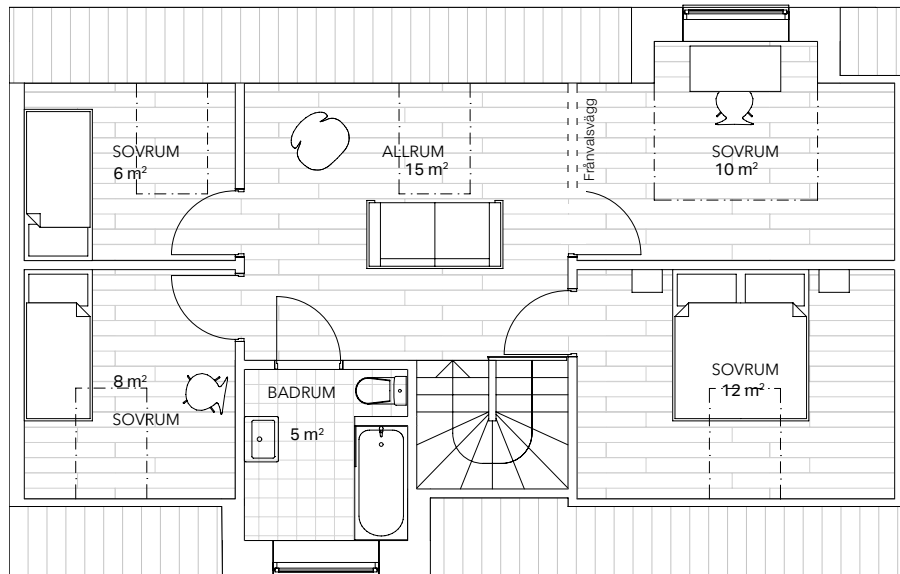
Ytterdörrar:  
Trä målas i Zinkgrå.  
Kulör NCS S2502-B

Fönsterbleck:  
Aluminium, Aluzink

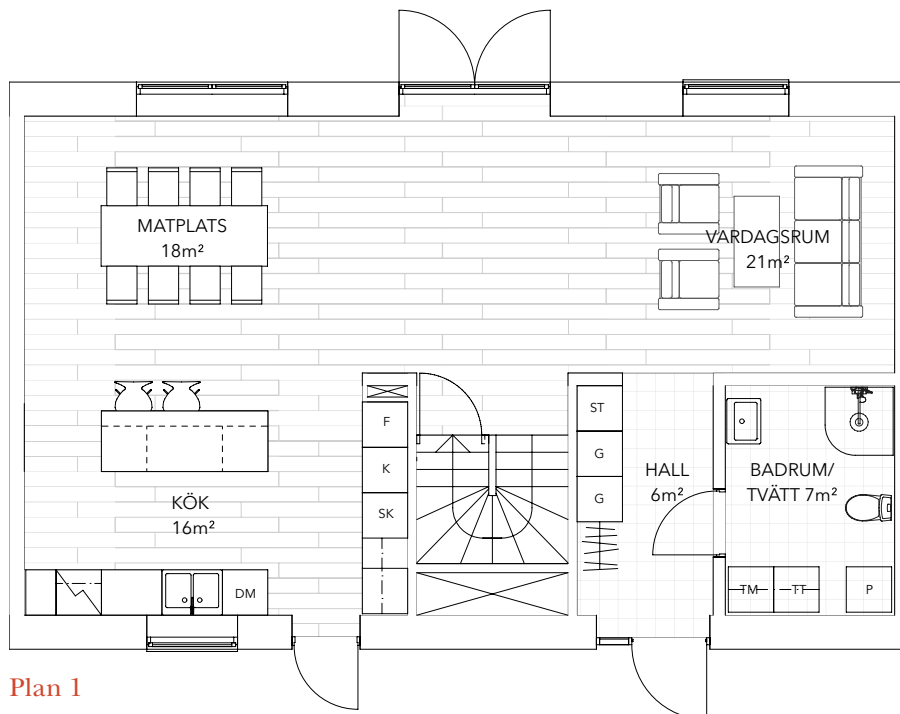
Stuprör, byggplåt:  
Plannja eller likvärdigt.  
Stål, Mörk silvermetallic, RAL 9007

# Päronlunden

## Hus A 2, 3, 6, 9, 12, 13, 14, 15



Plan 2



Plan 1

|    |            |    |             |
|----|------------|----|-------------|
| K  | Kylskåp    | G  | Garderob    |
| F  | Frys       | TM | Tvättmaskin |
| SK | Skåp       | TT | Torktumlare |
| DM | Diskmaskin | P  | Panna       |
| ST | Städsåp    |    |             |

0 5 m

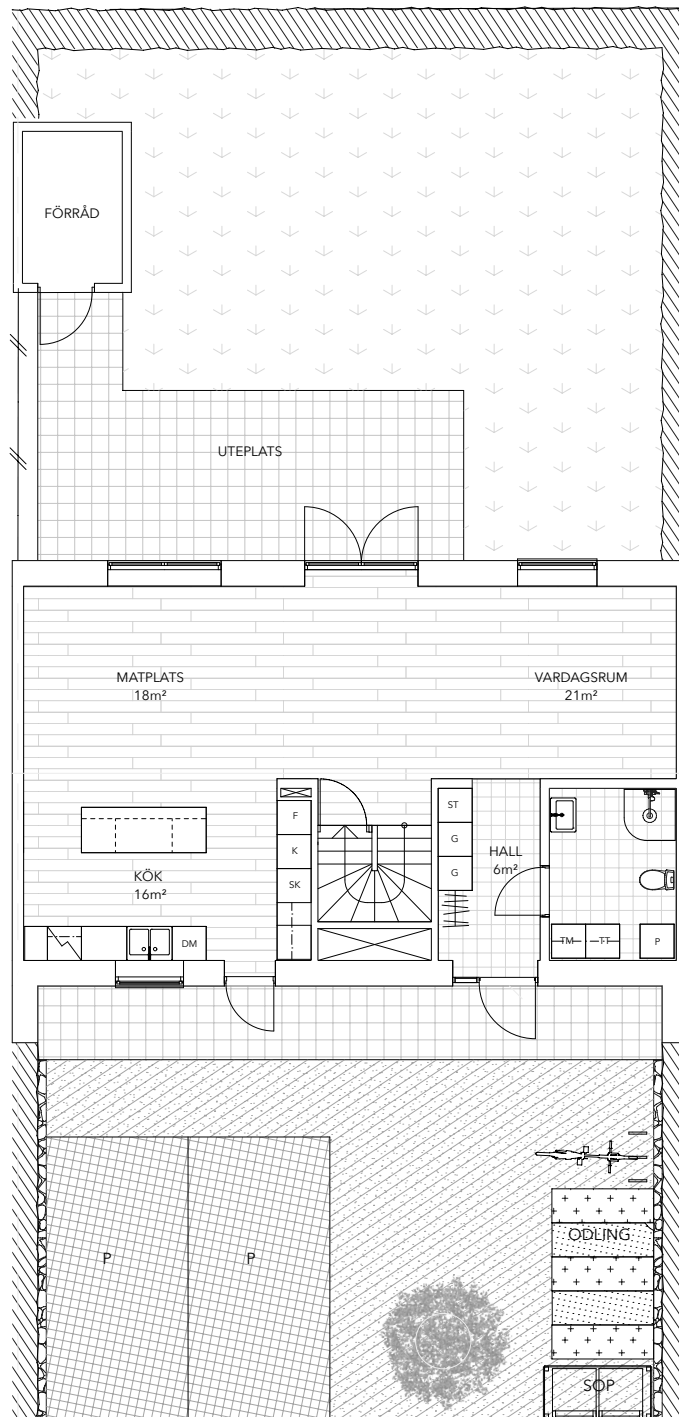
Skala 1:100

Med reservation för eventuella ändringar och tryckfel.



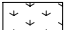
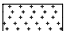







# *Päronlunden*

# Situationsplan





## FÖRKLARINGAR

-  GRÄSARMERAD BETONG
-  BETONGPLATTOR 1
-  GRÄSYTA 1
-  PLANTERING MED CORTENKANT
-  HÄCK
-  STENMJÖL
-  SINGEL MED CORTENKANT
-  KANTSTEN
-  TRÄD MED CORTENKANT
-  STAKET
-  SÖP 2st FYRFACKSKÄRL MED TRÄRIBBOR  
SE SEPARAT RITNING